

## Contact us

### Instituto de Medicina Molecular

Faculdade de Medicina da Universidade de Lisboa

Avenida Professor Egas Moniz

1649-028 Lisboa

Portugal

**Phone** (+351) 217 999 411

**Email** [imm-projects@medicina.ulisboa.pt](mailto:imm-projects@medicina.ulisboa.pt)

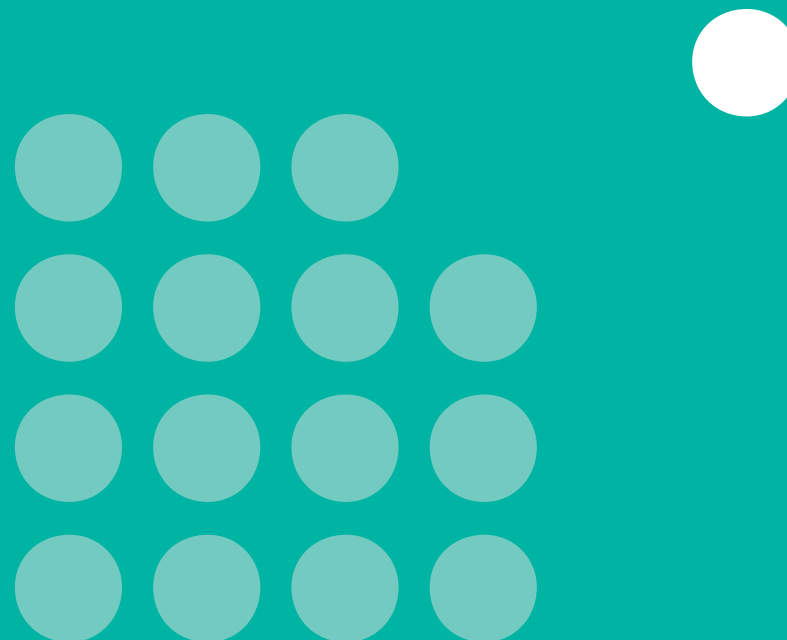
### EXCELLtoINNOV

[imm.medicina.ulisboa.pt](http://imm.medicina.ulisboa.pt)



**EXCELLtoINNOV** project is funded by the European Commission, through the ERA Chair actions under the Spreading Excellence and Widening Participation Work Programme of the HORIZON 2020 Research and Innovation Programme. This particular funding scheme intends to diminish disparities between research institutions in low performing Member States and regions and internationally leading counterparts at an EU level. It enables the selected institutions to award ERA Chairs to outstanding researchers and academics that have the capacities and capabilities to raise existing standards and boost research and innovation performance by attracting high-level research staff as well as EU funding and national research funds.

# EXCELLtoINNOV



This project has received funding from the European Union's Horizon 2020 research and innovation programme under grant agreement N° 667824



## Leverage research EXCELlence and INNOVation potential of Instituto de Medicina Molecular (IMM) through translational biomedical research in immunity and infection

iMM Lisboa is a leading Portuguese private non-profit research institute that offers a vibrant scientific environment, aiming to nurture innovative ideas in basic, clinical and translational biomedical research. Its vision is to achieve a world-class research portfolio focusing on innovative conceptual niches from the molecule to the bedside, in an institute where science meets medicine.



EXCELLtoINNOV is a HORIZON 2020 funded project under the Topic: WIDESPREAD-2-2014 ERA Chairs – aiming to place iMM Lisboa at the forefront of R&D+I in immunity and infection, through the recruitment of an ERA Chair Holder and the establishment of a translational biomedical research hub anchored in Lisbon.



### Our Strategic Goals

1

Leverage the national potential beyond borders

2

Act as the interface of Europe with America and Africa

3

Effectively contribute to overcome the health and demographic change societal challenges through worldwide collaborative efforts



### Marc Veldhoen

ERA Chair Holder

#### Keywords

Autoimmunity · Mucosal Immunity · Intraepithelial · Lymphocytes (IELs) · Metabolism · T helper Cells Differentiation

2003 PhD at Open University, National Institute for Medical Research, London, UK  
2003-2006 Post-doctoral research at Division of Molecular Immunology, National Institute for Medical Research, London, UK  
2006-2010 Senior Investigator at Division of Molecular Immunology, National Institute for Medical Research, London, UK  
2010-2016 Group Leader at Laboratory of Lymphocyte Signalling and Development, the Babraham Institute, Cambridge, UK  
Since 2016 Group Leader at iMM Lisboa, Portugal

**Main interests** Our laboratory studies the role that cells of the immune system play at the initiation, modulation and resolution of immune responses at epithelial barrier sites as well as the homeostatic control of epithelial cells. These studies provide insights into the mechanisms that control the maintenance, activation and function of immune cells located or enriched at mucosal surfaces such as the intestine, ultimately contributing to the prevention of undesirable immune responses that may result in chronic infections, allergies, autoimmunity and an increased risk of cancer.

### EXCELLtoINNOV Project Activities

Development of a new research line by the ERA Chair holder that will transversally impact all research areas at iMM Lisboa

Expansion of overseas collaborations in R&D+I projects

Implementation of structural changes at iMM Lisboa to successfully comply with the ERA priorities

An improved integration of iMM Lisboa in the regional, national and international business community