

Tango Remote Workstation

AUTHOR: Flow Cytometry Platform

APPROVAL: Mariana Fernandes

(Rubrica)

VERSION CONTROL

Number of Version	Date of version	Summary of changes
V1	08-01-2026	Original version

RECORDS GENERATED BY THIS PROCEDURE

Records' Identification	Indexation	Archive Responsible

INDEX

Important Notes	4
Tango Remote Connection	
Lisbon site Users.....	5
Oeiras site Users.....	9
Software	
FlowJo	13
IDEAS	13

Important Notes

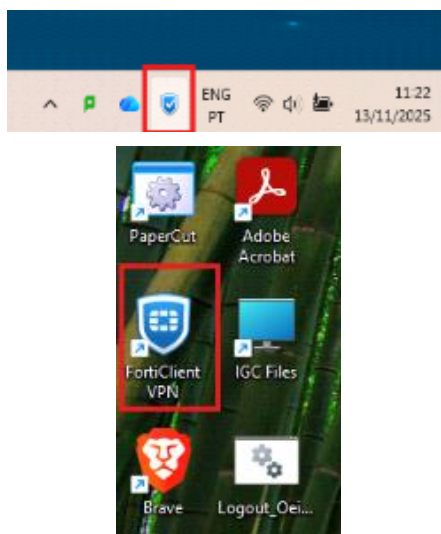
1. Access to Tango Workstation is free of charge but booking through Agendo is **MANDATORY**. Connection without booking is considered unauthorized and may affect the analysis that others might be doing at that moment and lead to data loss.
2. Please don't store any data on the **Desktop**, as it may compromise the performance of the computer.
3. Please create specific folders to store your data inside **Data (D:)**. Any files or folders outside this folder will be deleted without notice.
4. This workstation should be used for ANALYSIS ONLY and NOT FOR LONG TERM DATA STORAGE. Therefore, it is your responsibility to transfer the data to a backup server after you finish your analysis.
5. All files are routinely (monthly) erased to maintain enough free disk space for analysis, including data on SpectroFlo.
6. The Flow Cytometry Platform is not liable for any loss of data on the local hard disks.

TANGO REMOTE CONNECTION

Lisbon Site Users

Make sure you book your session on the Agendo calendar **[Oeiras] Flow Cytometry - Remote Data Analysis Workstation (Tango) - Lisbon Site Users**.

1. Locate the VPN (FortiClient) on the Taskbar or Desktop



2. Connect to the GIMM VPN
 - Click Connect to GIMM VPN.
 - Log in with your **GIMM credentials**.



Nome da VPN

GIMM VPN

☐

Salvar Senha

☐

sempre para cima

Connect

3. Confirm connection

- Once authenticated, you will see the VPN status as Connected.



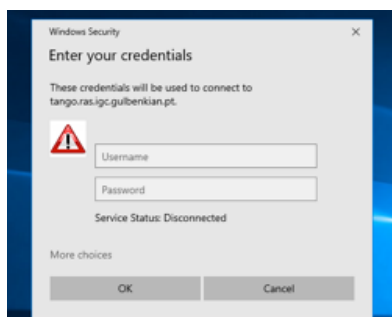
Nome da VPN GIMM VPN
Endereço IP 10.212.134.101
Usuário mariana.fernandes@gimm.pt
Duração 00:00:06
Bytes Recebidos 133.1 KB
Bytes Enviados 93.16 KB

Desconectar

4. Connect to Tango Workstation

a. FROM A WINDOWS COMPUTER:

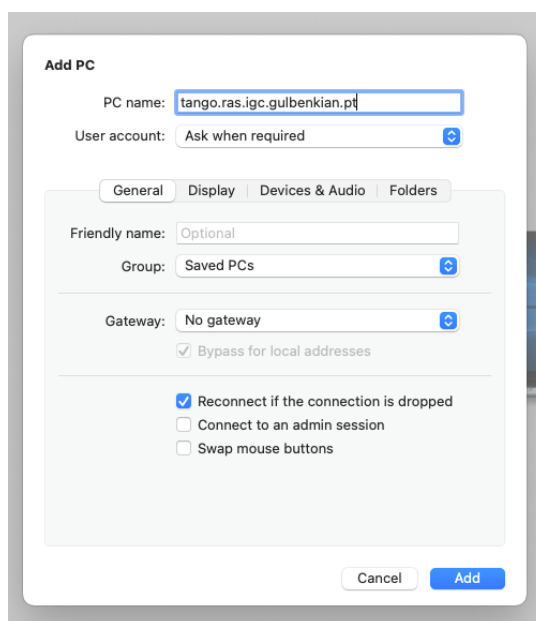
- Use **Remote Desktop Connection** to connect to Tango: tango.ras.igc.gulbenkian.pt



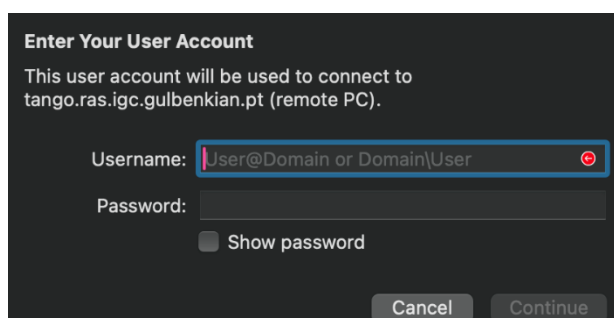
- Sign in using:
Username: .\Flow Cytometry User
Password: BHxm0ioObs*8O1

b. FROM A MAC COMPUTER:

- Download Windows App software from the App Store:
<https://apps.apple.com/pt/app/windows-app/id1295203466?l=en-GB&mt=12>
- Once installed, launch the Windows App software.
- On the top right, press the “+” button and select the “Add PC” option.
- Insert the PC name as follows:



- Double-click on the Tango workstation icon or select “Connect” in the (...) appearing in the bottom-right corner.



- Sign in using:
Username: .\Flow Cytometry User
Password: BHxm0ioObs*8O1

NOTE: All user have access to your workspace. This is not a private area. We recommend to copy your data to your server and delete your data from this workstation after your analysis is done.

5. Import your data to the workstation.

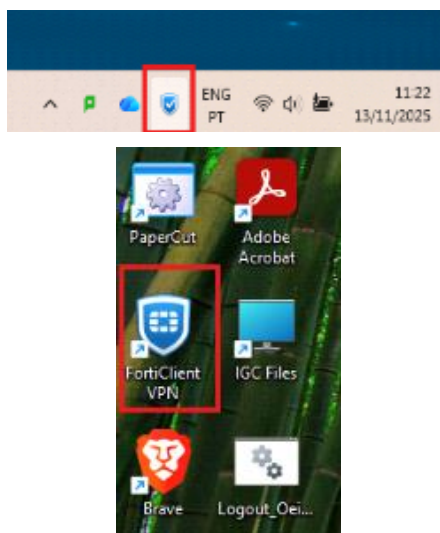
We recommend to use FileSender FCCN (<https://filesender.fccn.pt/>).

6. Create a specific folder to store your data inside **Data (D:)**.
7. At the end make sure you export your data to your personal computer using FCCN and backup your data to the server.
8. Disconnect from the Workstation.

Oeiras Site Users

Make sure you book your session on the Agendo calendar **[Oeiras] Flow Cytometry - Remote Data Analysis Workstation (Tango)**.

1. Locate the VPN (FortiClient) on the Taskbar or Desktop



2. Connect to the GIMM VPN
 - Click Connect to GIMM VPN.
 - Log in with your **GIMM credentials**.



Nome da VPN

GIMM VPN


☐

Salvar Senha

☐

sempre para cima

Connect

3. Confirm connection

- Once authenticated, you will see the VPN status as Connected.



Nome da VPN GIMM VPN
Endereço IP 10.212.134.101
Usuário mariana.fernandes@gimm.pt
Duração 00:00:06
Bytes Recebidos 133.1 KB
Bytes Enviados 93.16 KB

Desconectar

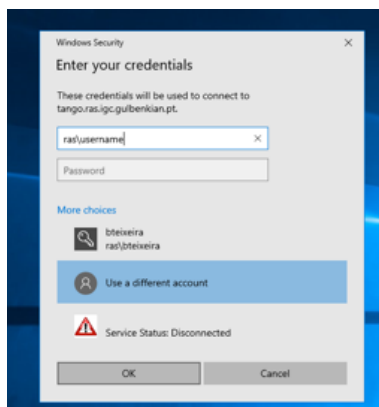
4. Connect to Tango Workstation

a. FROM A WINDOWS COMPUTER:

- Use **Remote Desktop Connection** to connect to Tango: tango.ras.igc.gulbenkian.pt

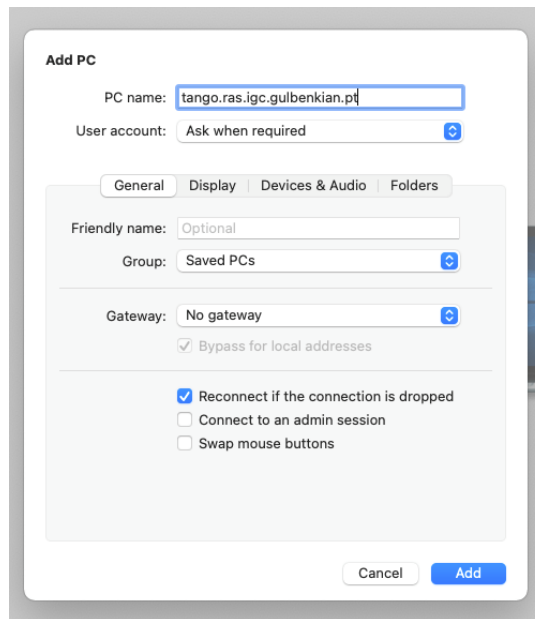


- A window named “Enter your credentials” will appear. Select the option “**More choices**”, then “**Use a different account**”
- Introduce your **IGC credentials** in the dialog box, adding “ras\” just before your username to connect to the workstation.

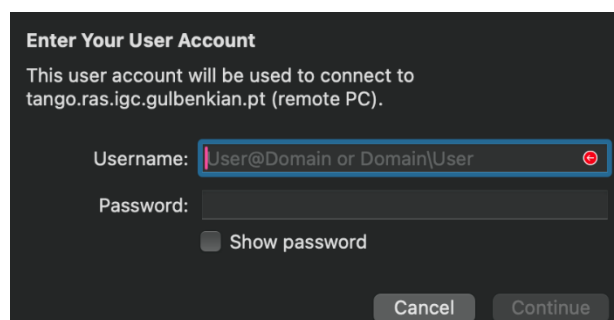


b. FROM A MAC COMPUTER:

- Download Windows App software from the App Store:
<https://apps.apple.com/pt/app/windows-app/id1295203466?l=en-GB&mt=12>
- Once installed, launch the Windows App software.
- On the top right, press the “+” button and select the “Add PC” option.
- Insert the PC name as follows:



- Double-click on the Tango workstation icon or select “Connect” in the (...) appearing in the bottom-right corner.



- Introduce your **IGC credentials** in the dialog box, adding “ras\” just before your username to connect to the workstation

NOTE: Nobody, except the Flow Cytometry Platform staff, will have access to your workspace. This is your private area. However, the platform reserves the right to access your workspace if the disks get full to delete data and release disk space.

5. Create a specific folder to store your data inside **Data (D:)**.
6. At the end, make sure you export and backup your data to your server.
7. Disconnect from the Workstation.

SOFTWARE

FlowJo

1. Launch FlowJo from the Main Menu > FlowJo folder > FlowJo_v10.10.1
2. On the right-down corner, click “License...” and select “Use your FlowJo
3. In the dialog box, insert the following credentials:
User: flowcytometryflowjo1@gimm.pt
Password: FLOWJOGIMM1
4. When you finish, **PLEASE QUIT** FlowJo to allow access to other users.

