

iMM COVID-19 Diagnostic Task Force

6th May 2020



13 405

processed samples since 31st of March

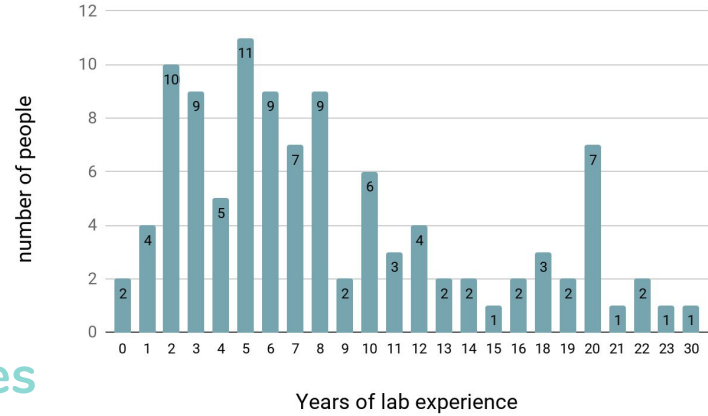
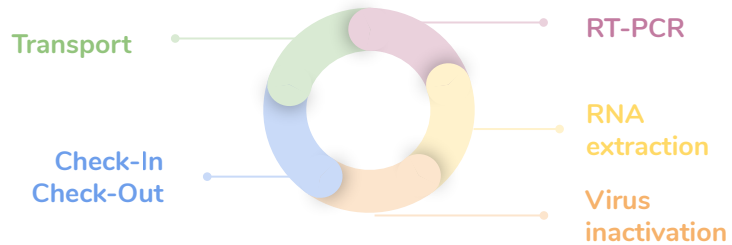
People behind the Task Force




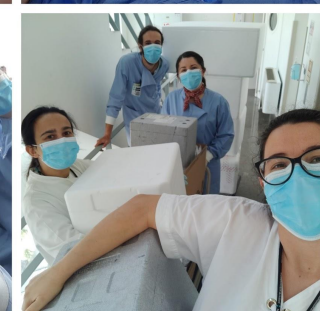
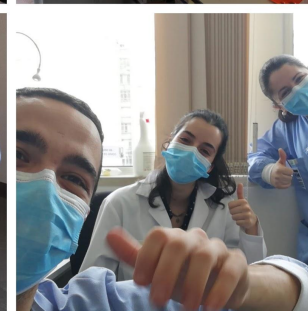
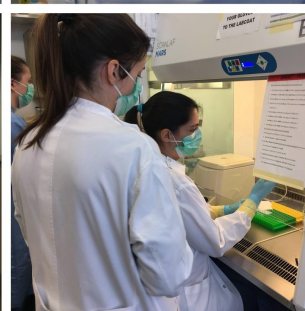
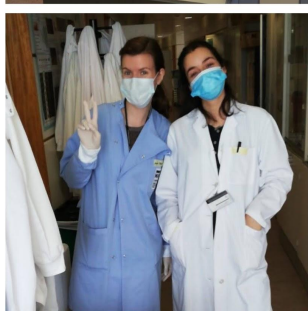
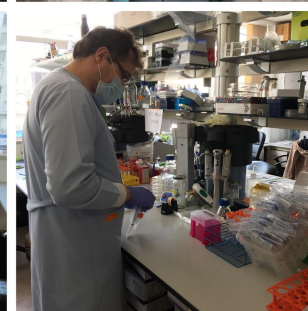
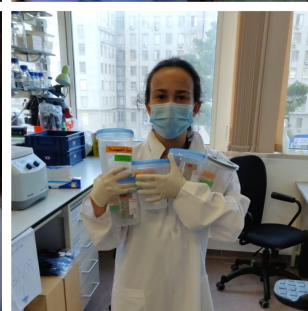
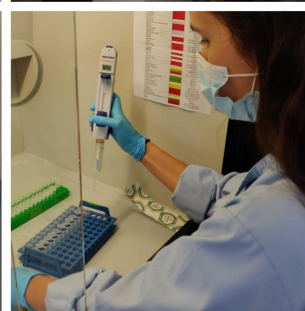
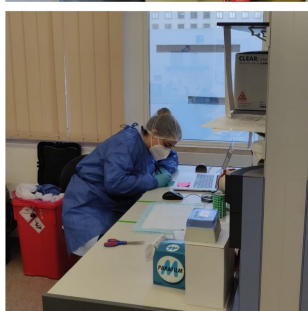
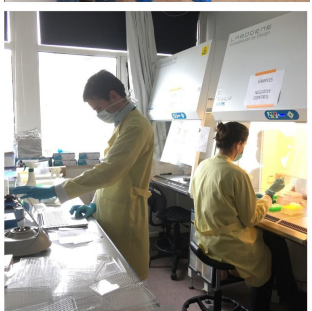
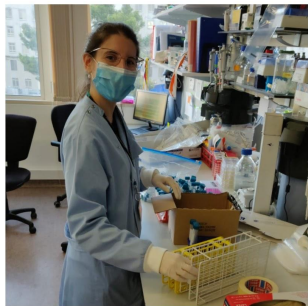
120
Volunteers

31
Labs and Facilities

8 Teams +
Coordination
& logistics




-  PCR Analysis
- Diagnostic
- Bridging Gap




Logistics and the faces behind it

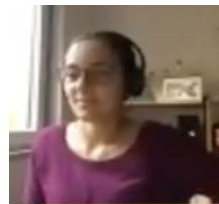
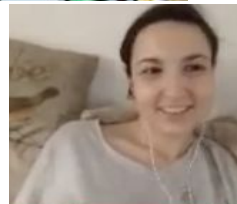
11 Labs/Offices/Rooms occupied

2000+ Meals & Snacks

35 WhatsApp groups 

81 Columns in Samples Table 

 **40 k** Swabs
100 k Eppis
50 k Tips
Purchases



Every great project needs a good foundation!

Thank You!!!

Task Force Records



Max **samples**
processed in 1 day

820



Latest **after-hours**
samples delivery

1:40 am

Max **swab kits**
prepared in 1 day

1840

7

Bio waste
containers per day

+ tons of plastic
and paper

Total Transport medium
aliquots



13 500 +



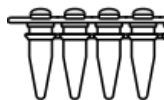
Number of **phone**
calls in 1 day

63

16

Liters of **EtOH**
absolute

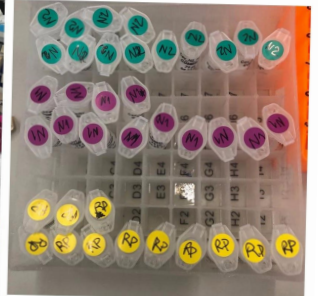
Max **PCR plates**
run in 1 day



30

44 000 +

Eppis **lid cut**



Task Force Partners



REPÚBLICA
PORTUGUESA

TRABALHO, SOLIDARIEDADE
E SEGURANÇA SOCIAL



**CRUZ
VERMELHA
PORTUGUESA**



GNR
GUARDA NACIONAL REPUBLICANA



HOSPITAL DE
SANTAMARIA



nzytech
genes & enzymes



Hospital **Cruz Vermelha** 

Our supporters



COMERCIAL



FUNDAÇÃO ORIENTE

CONTINENTE



Herdade da Malhadinha Nova
Alentejo - Portugal



FUNDAÇÃO LUSO-AMERICANA

Task Force in the Media



Agradecemos às equipas de limpeza, segurança e manutenção pelo vosso contributo durante este período.



Aos estimados colaboradores do I.M.M. :

Em nome dos 12 elementos da equipa de segurança da FMUL, não queremos deixar passar em branco a excelente atitude, reconhecimento e carinho que nos dispensaram neste período mais difícil, disponibilizando comida e bebidas a toda a equipa.

Em nome de todos,

MUITO OBRIGADO!

Muito obrigado.
Ajudou e muito. Vocês são espetaculares. Gosto muito de trabalhar convosco.
A todos da vossa equipa desejo o melhor, e estarei sempre aqui para o necessário.
Com os melhores cumprimentos,
Marta Pereira
Enfermeira Vogal do CCS do Aces Arrabida

6 min • através de NOS

Vanessa
Muitos Parabéns por todo o teu esforço e mobilização

Não hesites em me contactar quando for necessário
Manuel Heitor

15:49

Muito Obrigada! O esforço é colectivo. Vou transmitir os Parabéns à equipa :)

15:56 ✓

Wed 14:51

Boa tarde Dra Judite, muito grato pela disponibilidade e simpatia. Permite-me um beijinho e desejo-lhe um bom trabalho

Apr 26, 18:16

Sim, confirmo. A Enf está a ler e se tiver necessidade de esclarecimento de uma eventual dúvida, contactará a Dra Judite. Muito obrigada pela ajuda e colaboração.

Wed 15:54

Erta' tudo bem e resultados negativos. Reitero a minha gratidão pelo seu profissionalismo, ética e cordialidade

The Faces Behind the Mask!



The faces behind the mask



Transport Samples



You literally carry all the weight of this task force...Thank You!

The faces behind the mask



Check-in Check-out



You evolved from IN and OUT to ALL IN and helping everywhere... Thank You!!!

The faces behind the mask



Virus Inactivation



You were our shield... Thank You for keeping us all safe!

The faces behind the mask



RNA Extraction

Your care and resilience gives us clean concentrated RNA... Thank You!

The faces behind the mask



RT-PCR and Analysis

You precision, calm and rigour make our results trustworthy... Thank You!

The faces behind the mask



Diagnostic/Reports



You are our quality control... Thank You!!!



The faces behind the mask



Bridging the GAP

You are our voice...
Thank you!



Thank You!

A decorative pattern at the bottom of the slide consisting of a series of overlapping, semi-transparent circles in various shades of teal and light blue, creating a textured, wave-like effect.